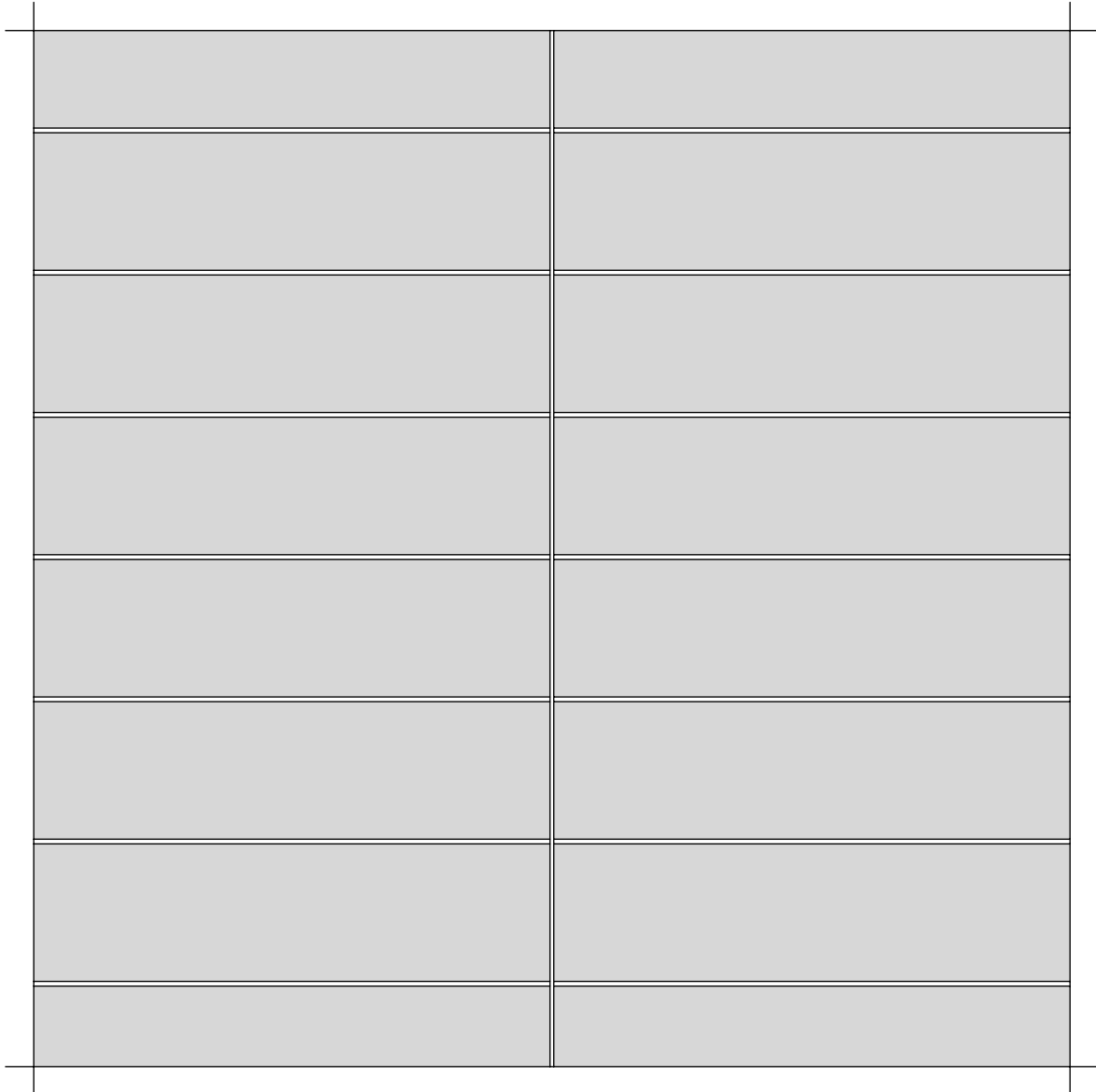


# KeraTwin®K20

OMEGAPROFIL AUF HORIZONTALLEM HUTPROFIL  
OMEGA SYSTEM RAIL ON HORIZONTAL HAT PROFILE  
RAIL SYSTEME OMEGA SUR PROFILE CHAPE HORIZONTAL



WEITERE OBJEKTSPEZIFISCHE DETAILS AUF ANFRAGE  
FURTHER PROJECT-RELATED DETAILS UPON REQUEST  
D'AUTRES DETAILS RELATIFS AU PROJET SUR DEMANDE

Alle Rechte vorbehalten. Außervertragliche Nutzung nur mit unserer schriftlichen Genehmigung.  
All rights reserved. Noncontract use is subject to our previous written consent.  
Tous droits réservés. Utilisation hors contract seulement avec notre autorisation écrite.

**DEUTSCHE STEINZEUG**  **AGROB BUCHTAL** AGROB BUCHTAL GmbH Architektenservice D - 92521 Schwarzenfeld  
Tel. 09435 / 391 3238 e-mail: as.fassade@deutsche-steinzeug.de

STAND: 2018

DIES SIND UNVERBINDLICHE KONSTRUKTIONSVORSCHLÄGE, DIE FÜR JEDES PROJEKT AUF ANWENDBARKEIT UND RICHTIGKEIT GEPRÜFT WERDEN MÜSSEN.  
THESE ARE NOT BINDING CONSTRUCTION PROPOSALS WHICH HAVE TO BE VERIFIED FOR EACH INDIVIDUAL PROJECT AS REGARDS APPLICABILITY AND CORRECTNESS.  
IL S' AGIT DE PROPOSITIONS DE CONSTRUCTION SANS ENGAGEMENT DE NOTRE PART QUI DOIVENT ETRE VERIFIEES POUR CHAQUE PROJET A LEUR EXACTITUDE ET FAISABILITE.

# SYSTEMÜBERSICHT

SYSTEM SCHEME

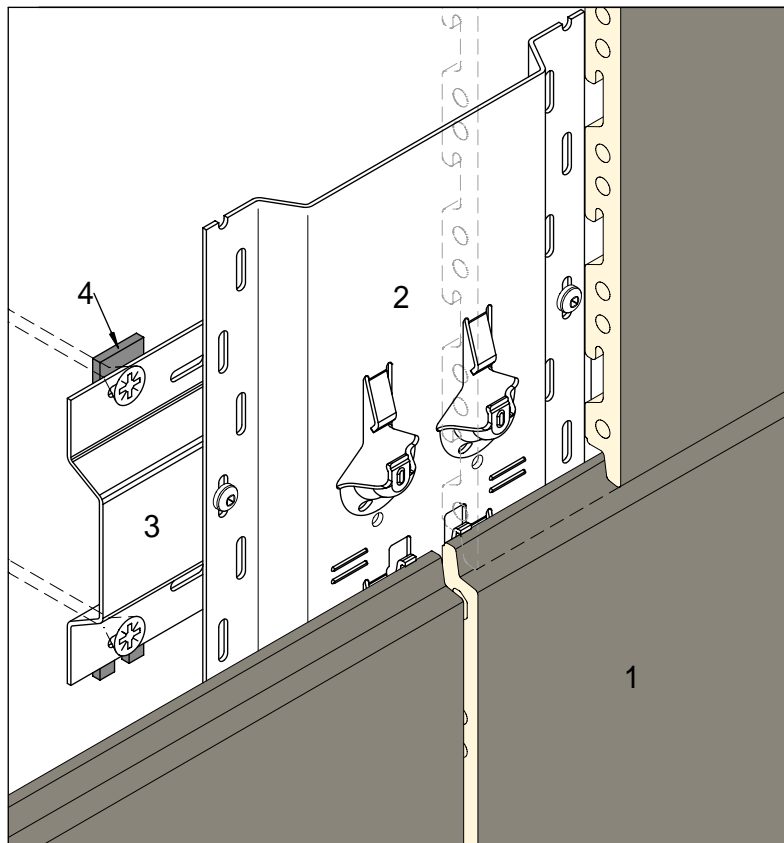
SYSTEME - VUE D' ENSEMBLE

## KeraTwin® K20

OMEGAPROFIL AUF HORIZONTALER HUTPROFIL

OMEGA SYSTEM RAIL ON HORIZONTAL HAT PROFILE

RAIL SYSTEME OMEGA SUR PROFILE CHAPE HORIZONTAL



- 1 - KeraTwin® K20 - FASSADENPLATTE
- 2 - VERTIKALES OMEGAPROFIL Art.-Nr.: 624-XXX / 627-XXX
- 3 - HORIZONTALES HUTPROFIL
- 4 - DISTANZSCHEIBE

- 1 - KeraTwin® K20 - PANEL
- 2 - VERTICAL OMEGA SYSTEM RAIL Art.-Nr.: 624-XXX / 627-XXX
- 3 - HORIZONTAL HAT PROFIL
- 4 - DISTANCE DISC

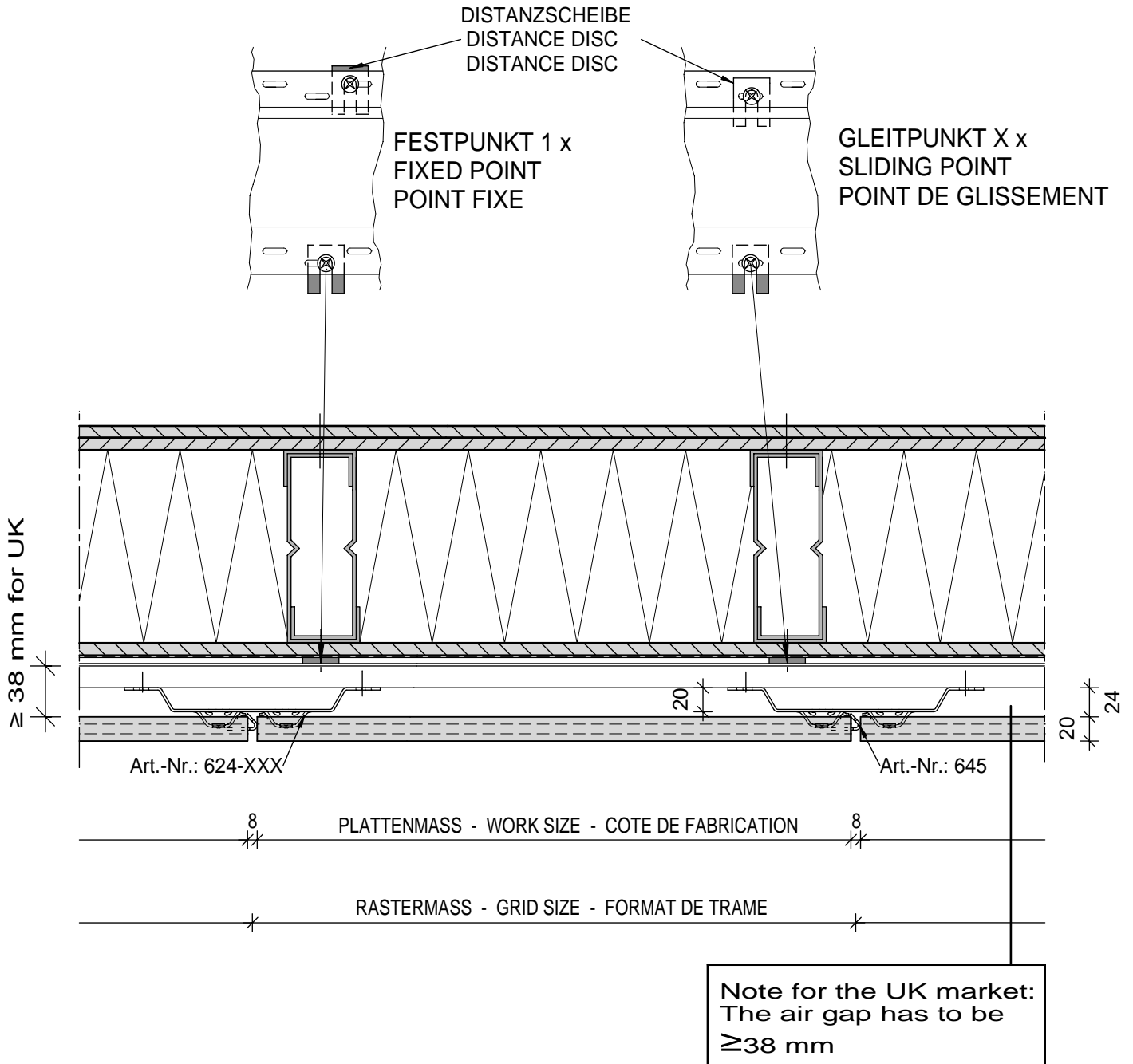
- 1 - DALLE KeraTwin® K20
- 2 - RAIL SYSTEME OMEGA VERTICAL Art.-Nr.: 624-XXX / 627-XXX
- 3 - PROFILE CHAPE HORIZONTAL
- 4 - DISTANCE DISC

# SYSTEMSCHNITT HORIZONTAL

HORIZONTAL SECTION  
COUPE HORIZONTALE

KeraTwin® K20

OMEGAPROFIL AUF HORIZONTALLEM HUTPROFIL  
OMEGA SYSTEM RAIL ON HORIZONTAL HAT PROFILE  
RAIL SYSTEME OMEGA SUR PROFILE CHAPE HORIZONTAL

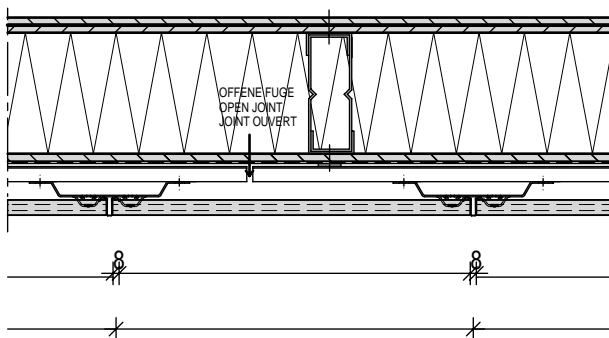
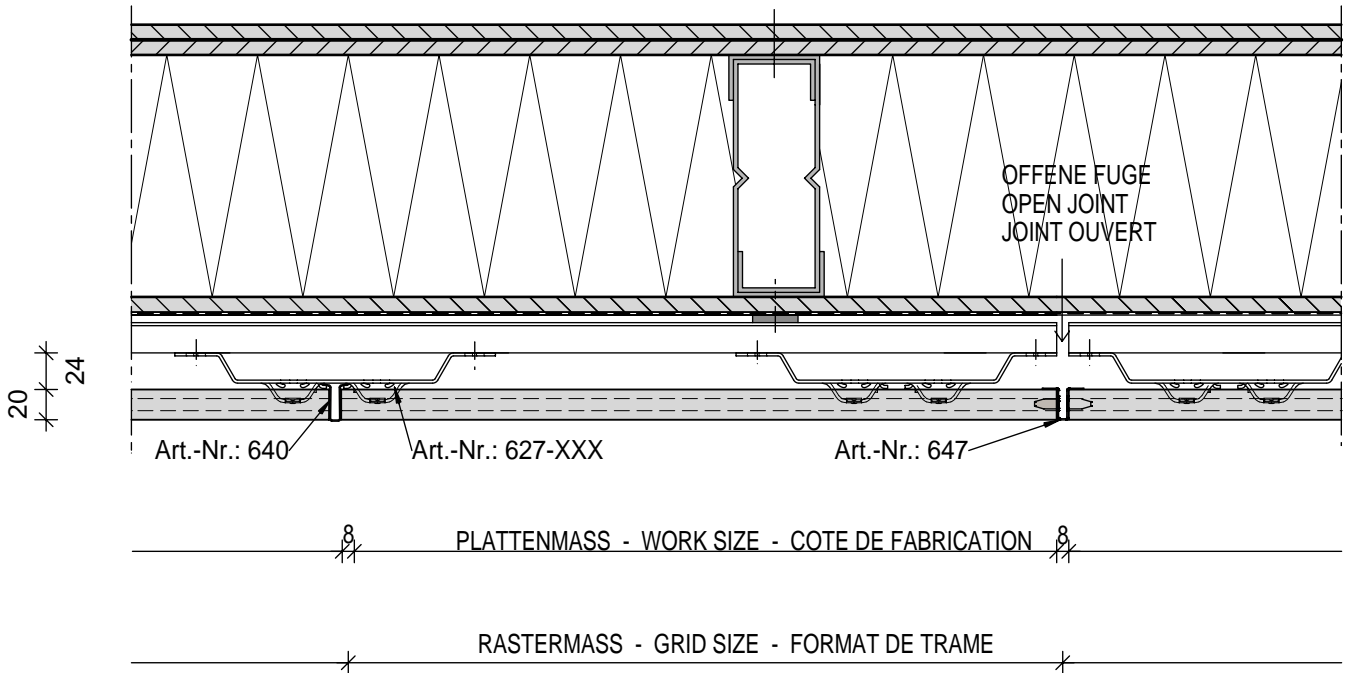


# PROFILSTOSS HORIZONTAL

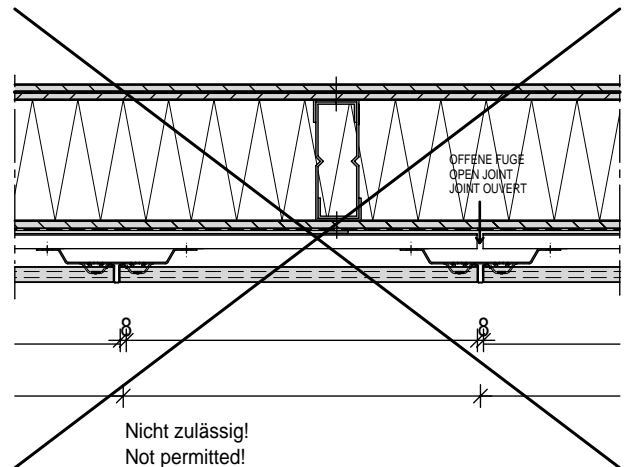
HORIZONTAL BUTT-JOINT OF PROFILES  
BOUT DE PROFILE HORIZONTAL

KeraTwin® K20

OMEGAPROFIL AUF HORIZONTALLEM HUTPROFIL  
OMEGA SYSTEM RAIL ON HORIZONTAL HAT PROFILE  
RAIL SYSTEME OMEGA SUR PROFILE CHAPE HORIZONTAL



Alternativ  
Alternative  
Alternatif



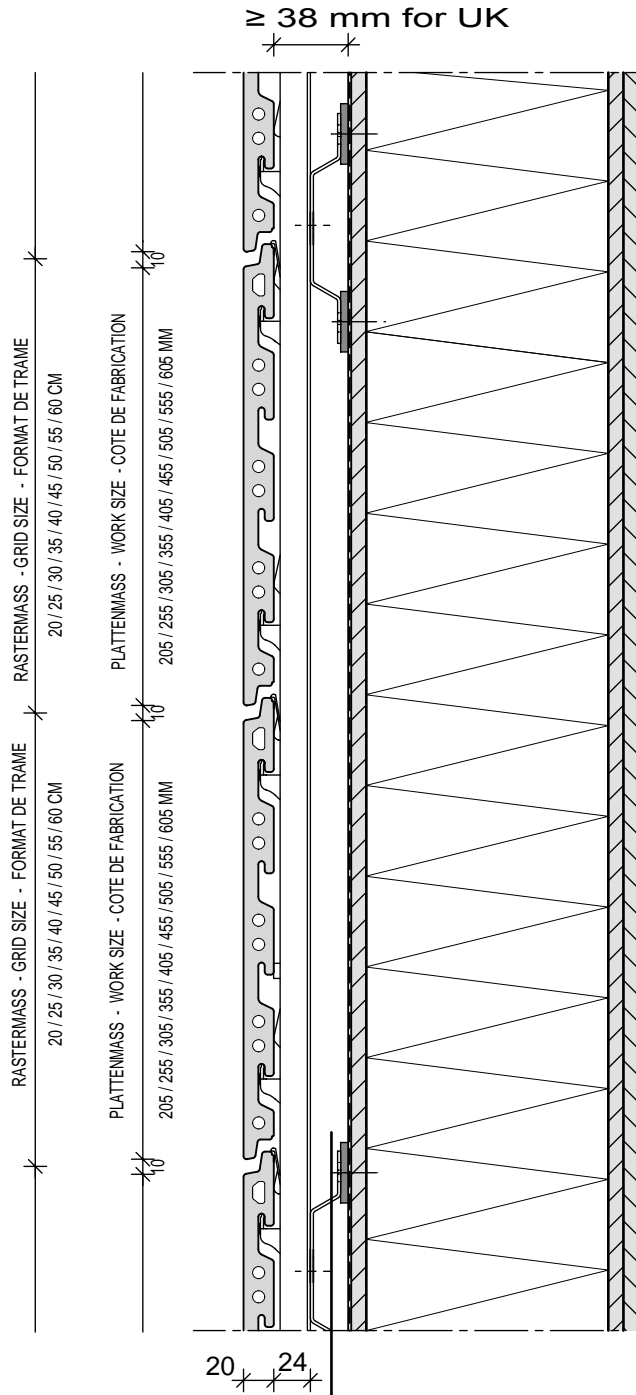
Nicht zulässig!  
Not permitted!  
Non admissible!

# SYSTEMSCHNITT VERTIKAL

VERTICAL SECTION  
COUPE VERTICALE

KeraTwin® K20

OMEGAPROFIL AUF HORIZONTALER HUTPROFIL  
OMEGA SYSTEM RAIL ON HORIZONTAL HAT PROFILE  
RAIL SYSTEME OMEGA SUR PROFILE CHAPE HORIZONTAL



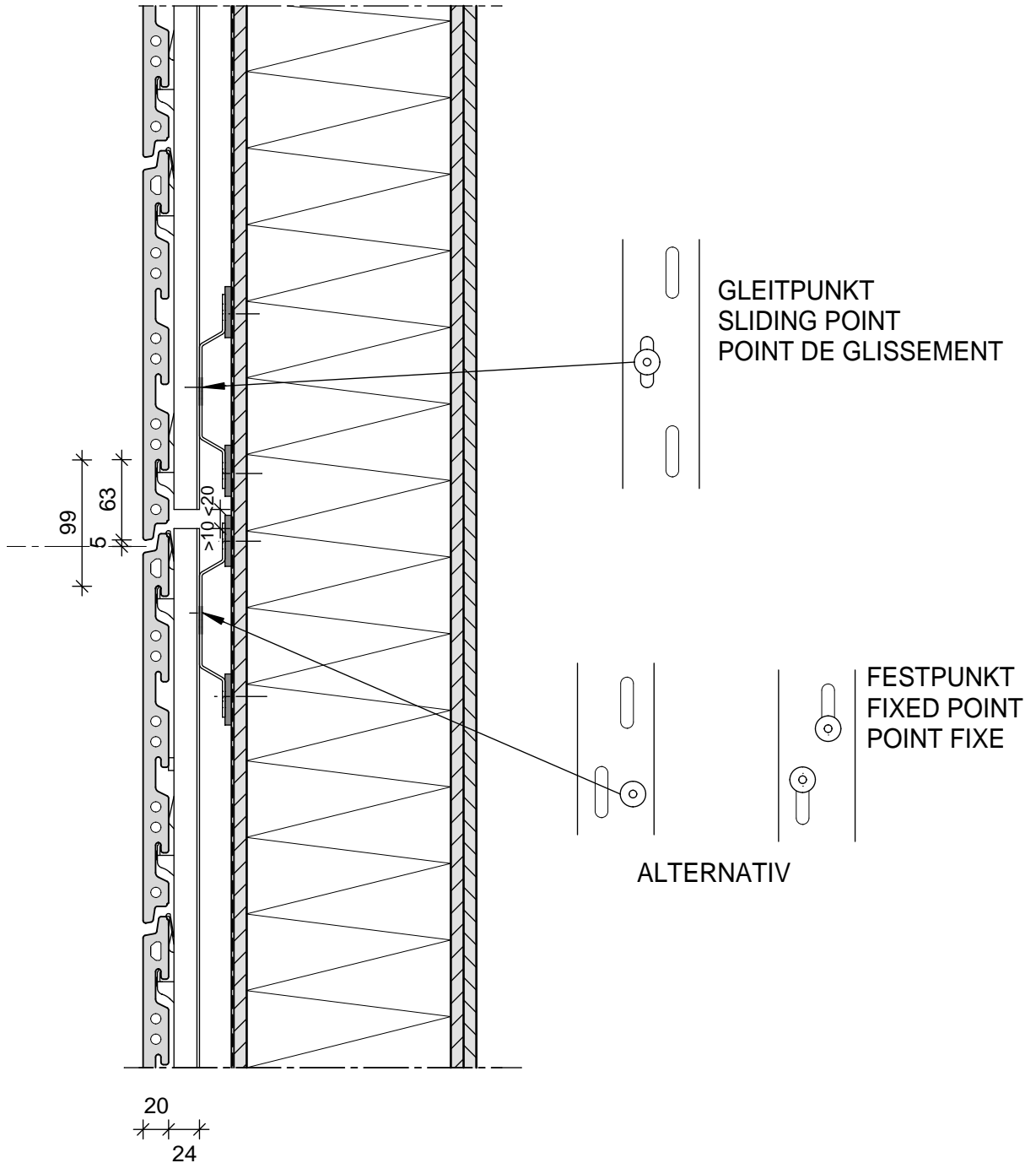
Note for the UK market:  
The air gap has to be  
 $\geq 38$  mm

# PROFILSTOSS VERTIKAL

VERTICAL BUTT-JOINT OF PROFILES  
BOUT DE PROFILE VERTICAL

KeraTwin® K20

OMEGAPROFIL AUF HORIZONTALLEM HUTPROFIL  
OMEGA SYSTEM RAIL ON HORIZONTAL HAT PROFILE  
RAIL SYSTEME OMEGA SUR PROFILE CHAPE HORIZONTAL

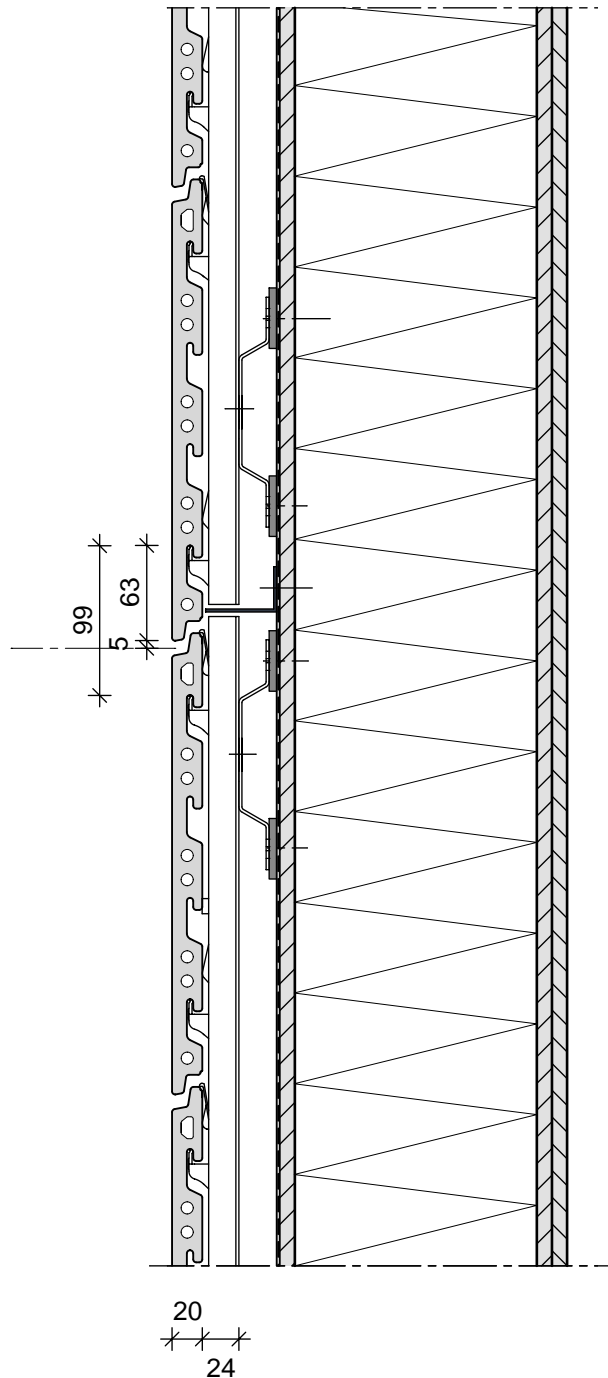


# BRANDSPERRE

FIRE BARRIER  
PARE-FEU

## KeraTwin® K20

OMEGAPROFIL AUF HORIZONTALM HUTPROFIL  
OMEGA SYSTEM RAIL ON HORIZONTAL HAT PROFILE  
RAIL SYSTEME OMEGA SUR PROFILE CHAPE HORIZONTAL

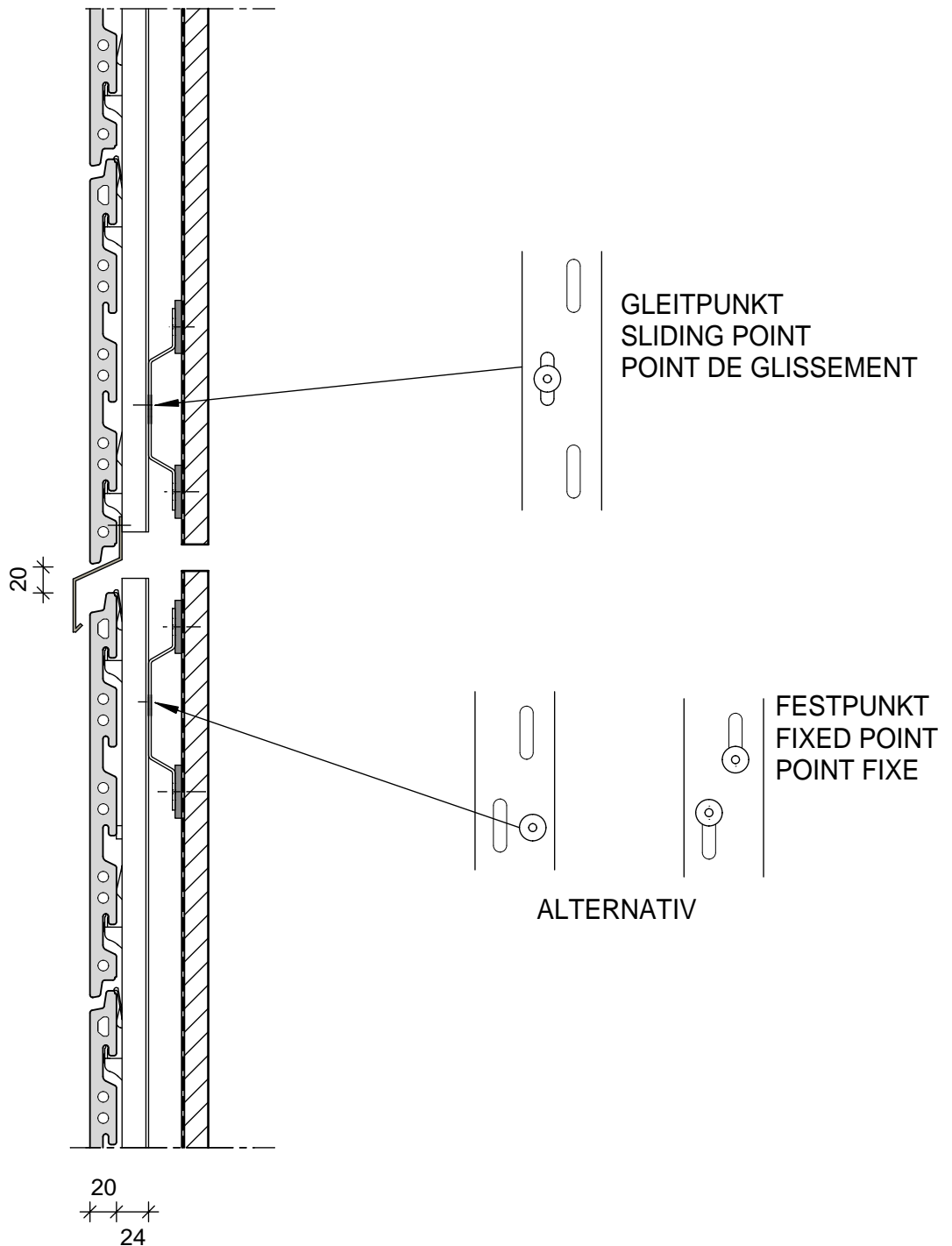


# GESCHOSSAUSGLEICH

FLOOR EXPANSION JOINT  
JOINT DE DILATATION ENTRE ETAGES

KeraTwin® K20

OMEGAPROFIL AUF HORIZONTALM HUTPROFIL  
OMEGA SYSTEM RAIL ON HORIZONTAL HAT PROFILE  
RAIL SYSTEME OMEGA SUR PROFILE CHAPE HORIZONTAL



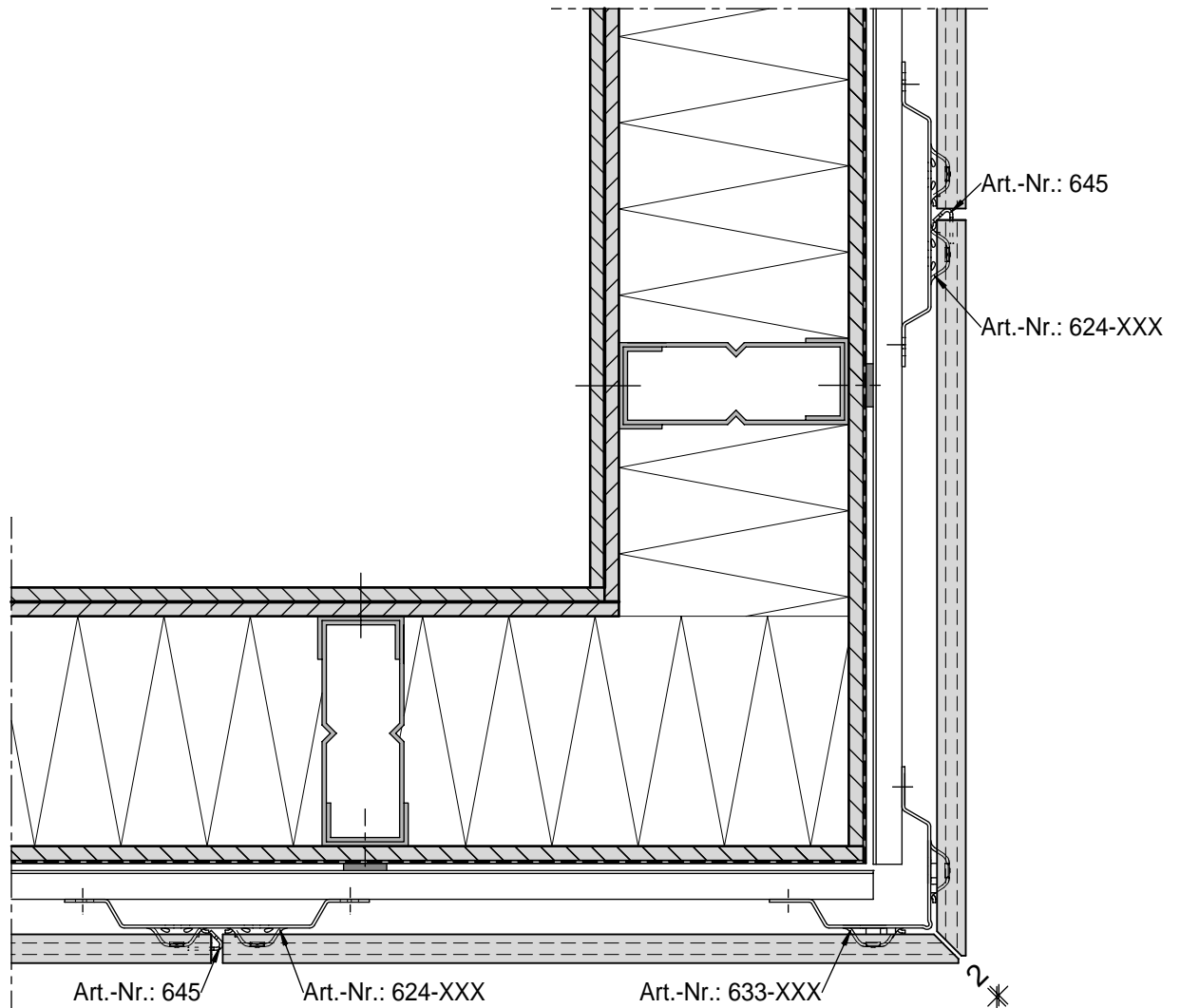


# AUSSENECKE MIT GEHRUNGSPLATTEN

EXTERNAL ANGLE WITH MITRED TILES  
ANGLE EXTERIEUR AVEC CARREAUX EN BIAIS

KeraTwin® K20

OMEGAPROFIL AUF HORIZONTALER HUTPROFIL  
OMEGA SYSTEM RAIL ON HORIZONTAL HAT PROFILE  
RAIL SYSTEME OMEGA SUR PROFILE CHAPE HORIZONTAL

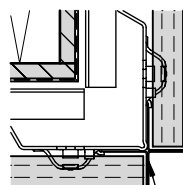
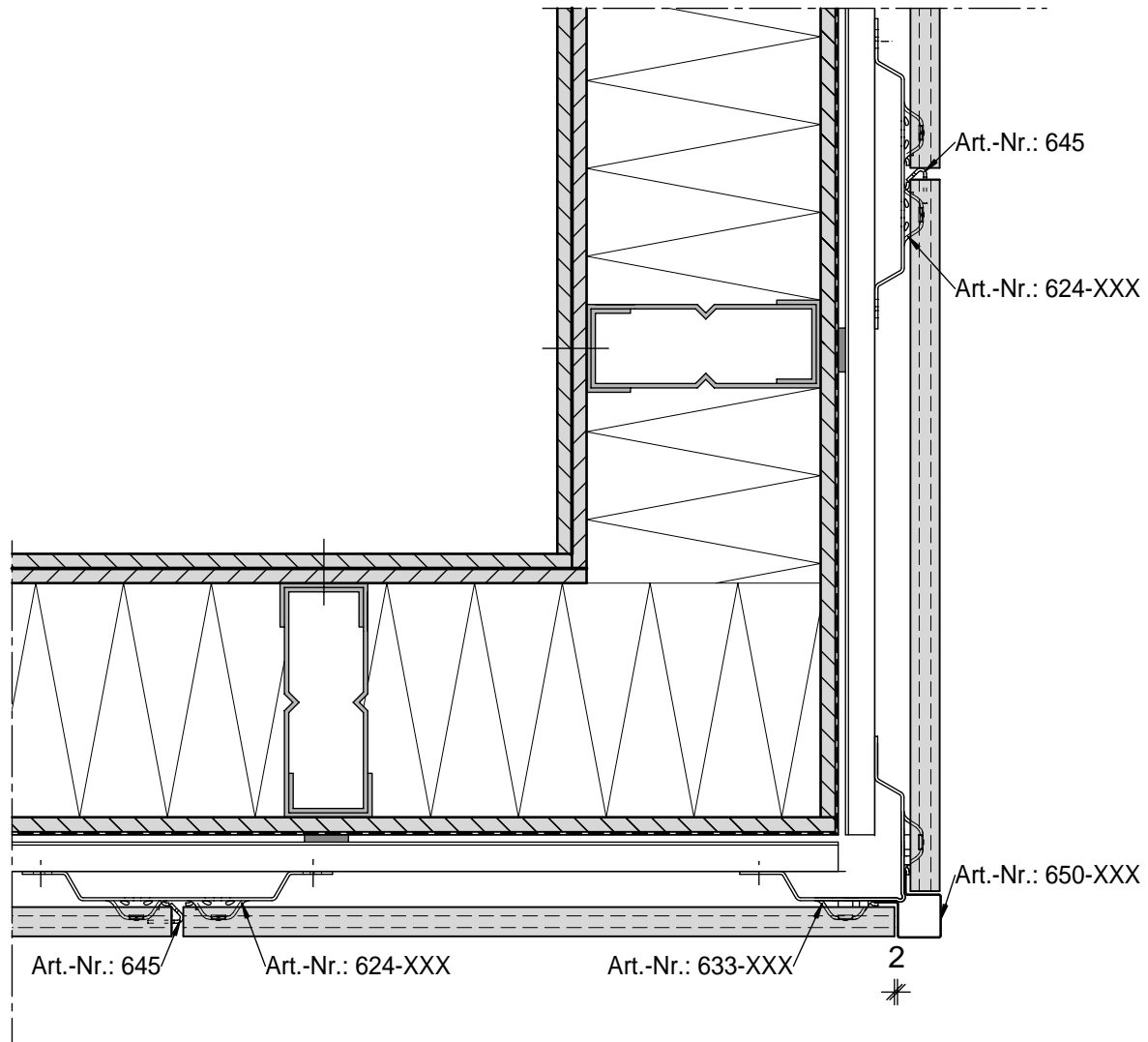


# AUSSENECKE MIT ECKPROFIL

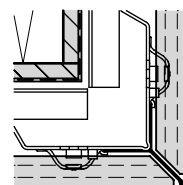
EXTERNAL ANGLE WITH CORNER PROFILE  
ANGLE EXTERIEUR AVEC PROFILE D' ANGLE

KeraTwin® K20

OMEGAPROFIL AUF HORIZONTALM HUTPROFIL  
OMEGA SYSTEM RAIL ON HORIZONTAL HAT PROFILE  
RAIL SYSTEME OMEGA SUR PROFILE CHAPE HORIZONTAL



Art.-Nr.: 654-XXX



Art.-Nr.: 652-XXX

# SOCKELANSCHLUSS

CONNECTION TO PLINTH

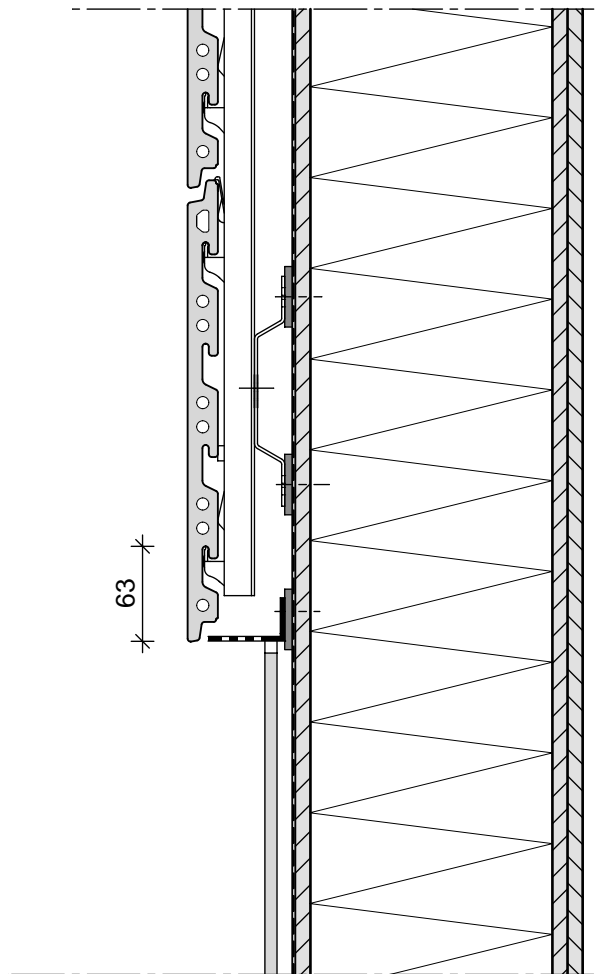
RACCORD DE SOCLE

KeraTwin® K20

OMEGAPROFIL AUF HORIZONTALM HUTPROFIL

OMEGA SYSTEM RAIL ON HORIZONTAL HAT PROFILE

RAIL SYSTEME OMEGA SUR PROFILE CHAPE HORIZONTAL



# FENSTERSTURZ

WINDOW LINTEL

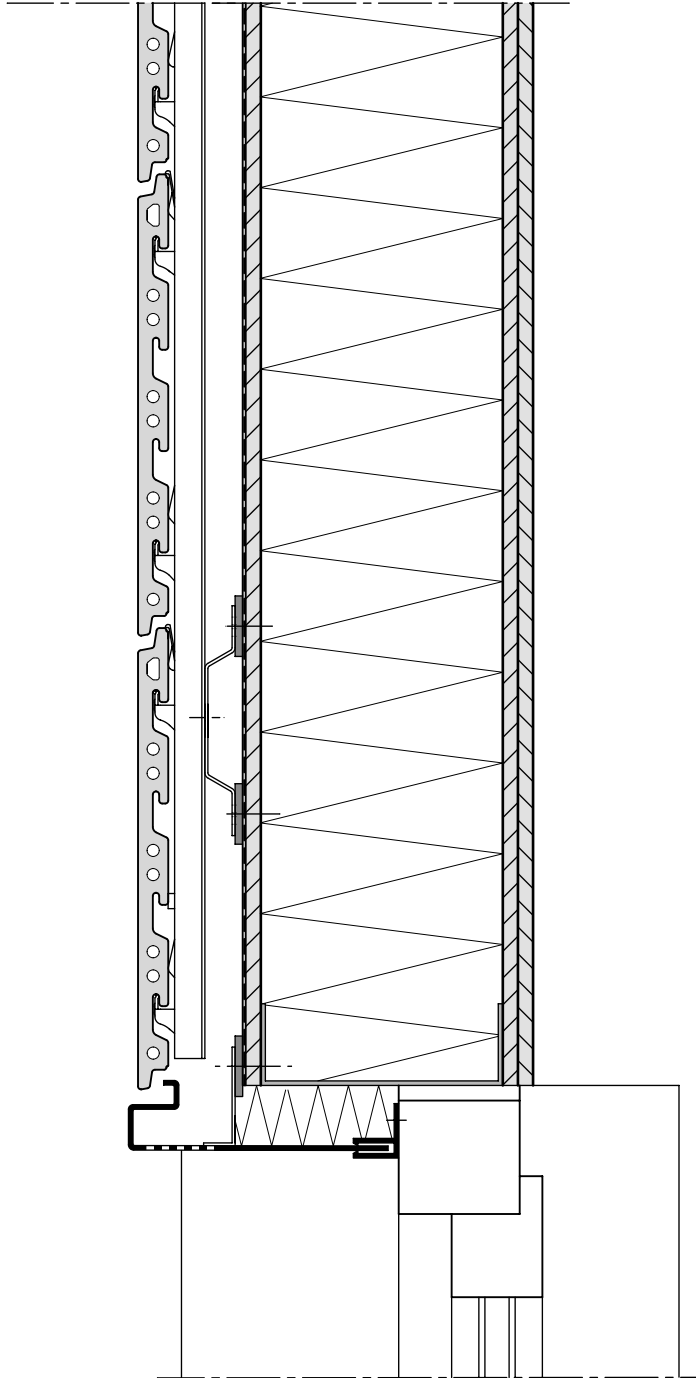
LINTEAU DE LA FENETRE

KeraTwin® K20

OMEGAPROFIL AUF HORIZONTALM HUTPROFIL

OMEGA SYSTEM RAIL ON HORIZONTAL HAT PROFILE

RAIL SYSTEME OMEGA SUR PROFILE CHAPE HORIZONTAL



# FENSTERBANK

WINDOW SILL

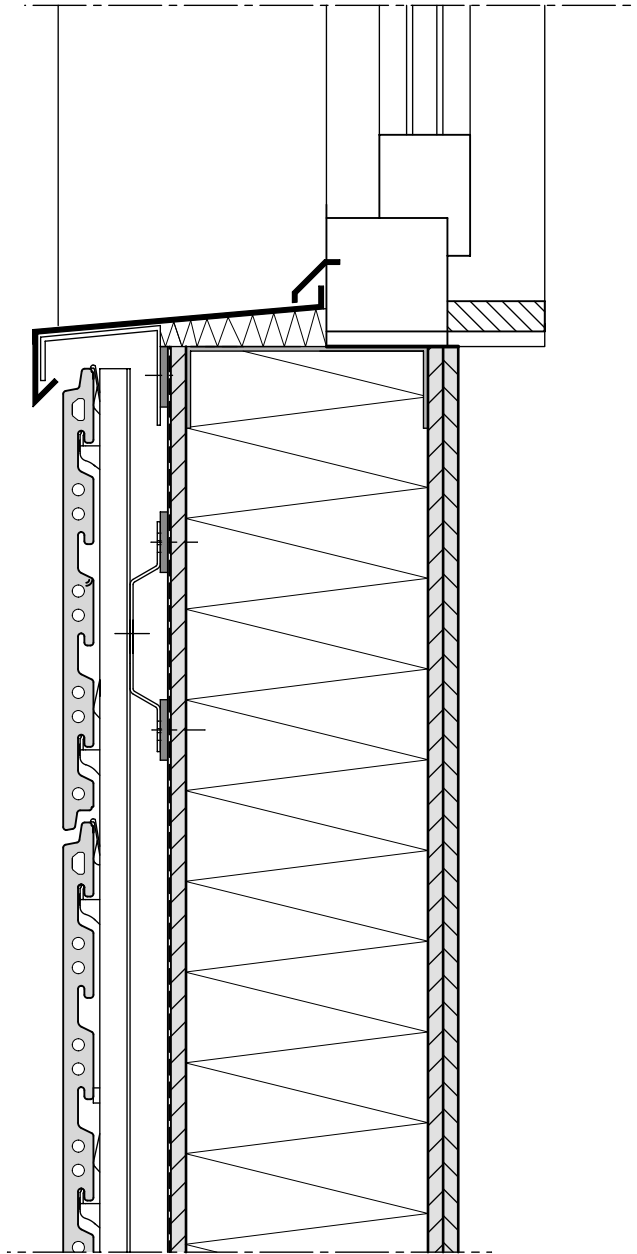
APPUI DE FENETRE

KeraTwin® K20

OMEGAPROFIL AUF HORIZONTALLEM HUTPROFIL

OMEGA SYSTEM RAIL ON HORIZONTAL HAT PROFILE

RAIL SYSTEME OMEGA SUR PROFILE CHAPE HORIZONTAL

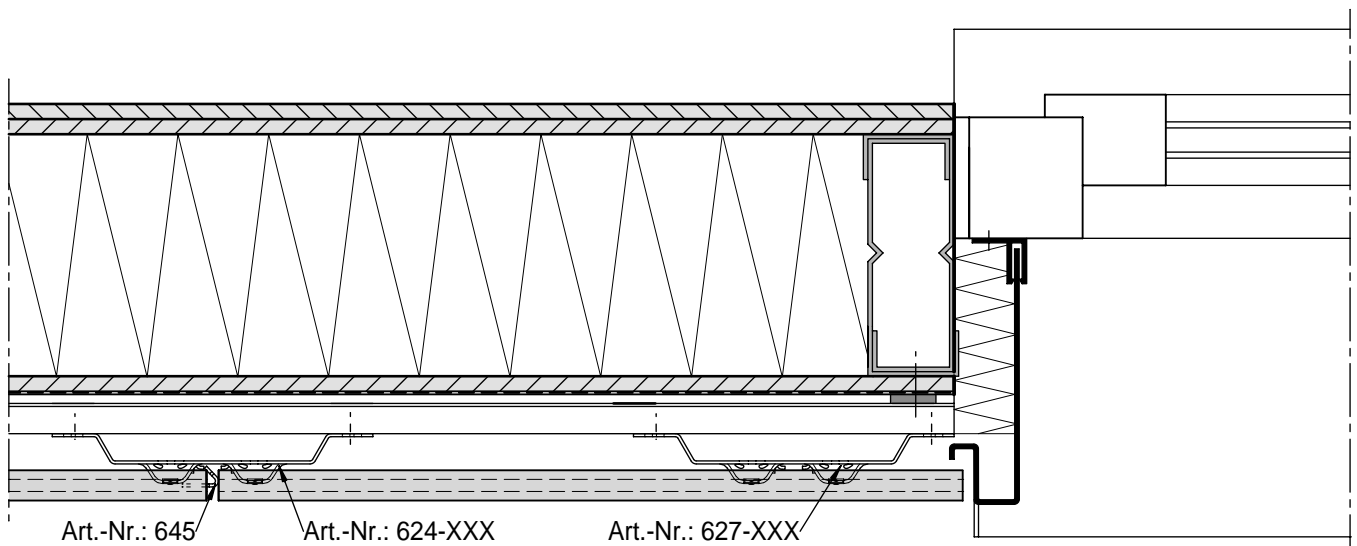


# FENSTERLEIBUNG MIT BLECH

EMBRASURE OF THE WINDOW  
EMBRASURE DE FENETRE

KeraTwin® K20

OMEGAPROFIL AUF HORIZONTALLEM HUTPROFIL  
OMEGA SYSTEM RAIL ON HORIZONTAL HAT PROFILE  
RAIL SYSTEME OMEGA SUR PROFILE CHAPE HORIZONTAL

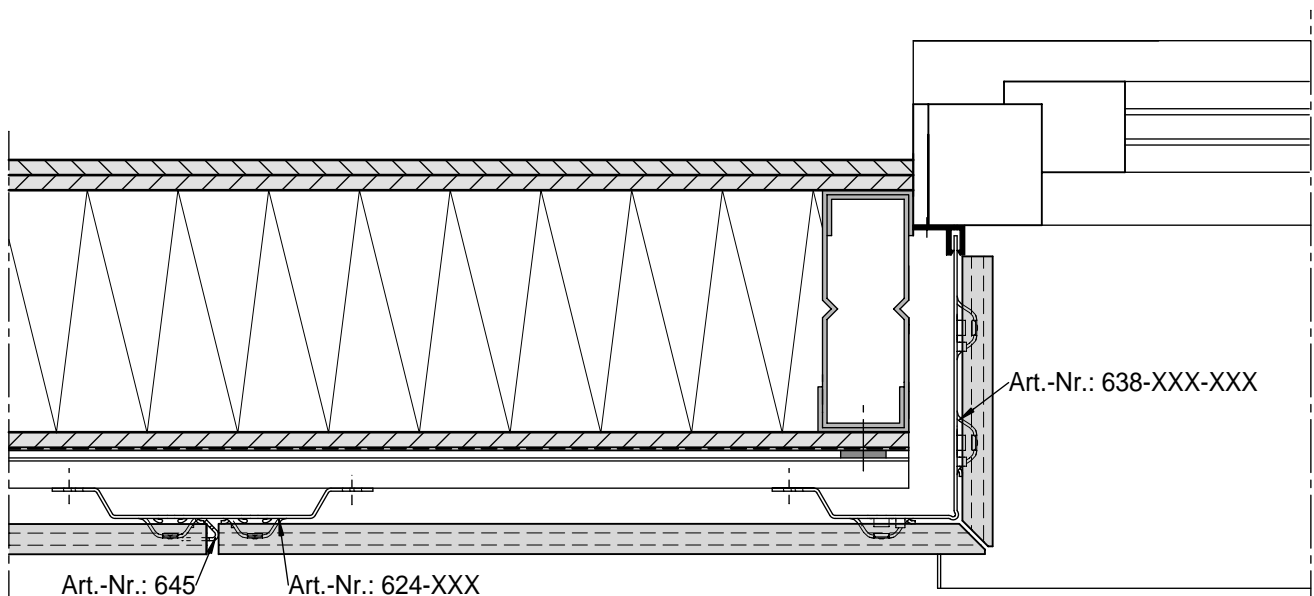


# FENSTERLEIBUNG MIT KERATWIN

WINDOW EMBRASURE WITH KERATWIN  
EMBRASURE DE FENETRE AVEC KERATWIN

KeraTwin® K20

OMEGAPROFIL AUF HORIZONTALM HUTPROFIL  
OMEGA SYSTEM RAIL ON HORIZONTAL HAT PROFILE  
RAIL SYSTEME OMEGA SUR PROFILE CHAPE HORIZONTAL

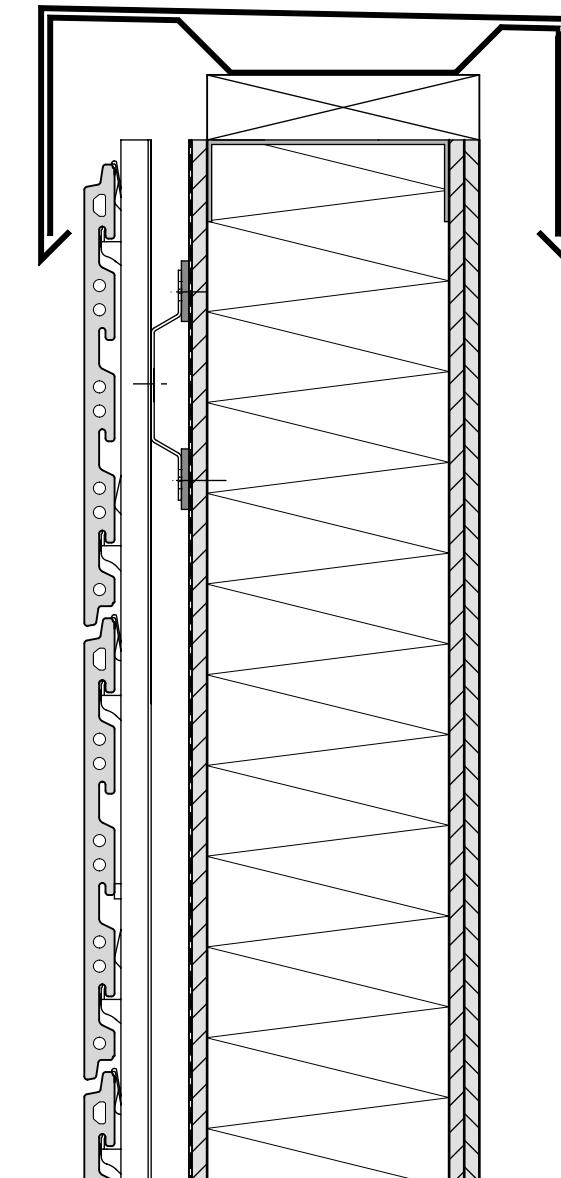


# ATTIKAABSCHLUSS

COVERING OF THE ROOF PARAPET  
RECOUVREMENT D' ATTIQUE

KeraTwin® K20

OMEGAPROFIL AUF HORIZONTALM HUTPROFIL  
OMEGA SYSTEM RAIL ON HORIZONTAL HAT PROFILE  
RAIL SYSTEME OMEGA SUR PROFILE CHAPE HORIZONTAL



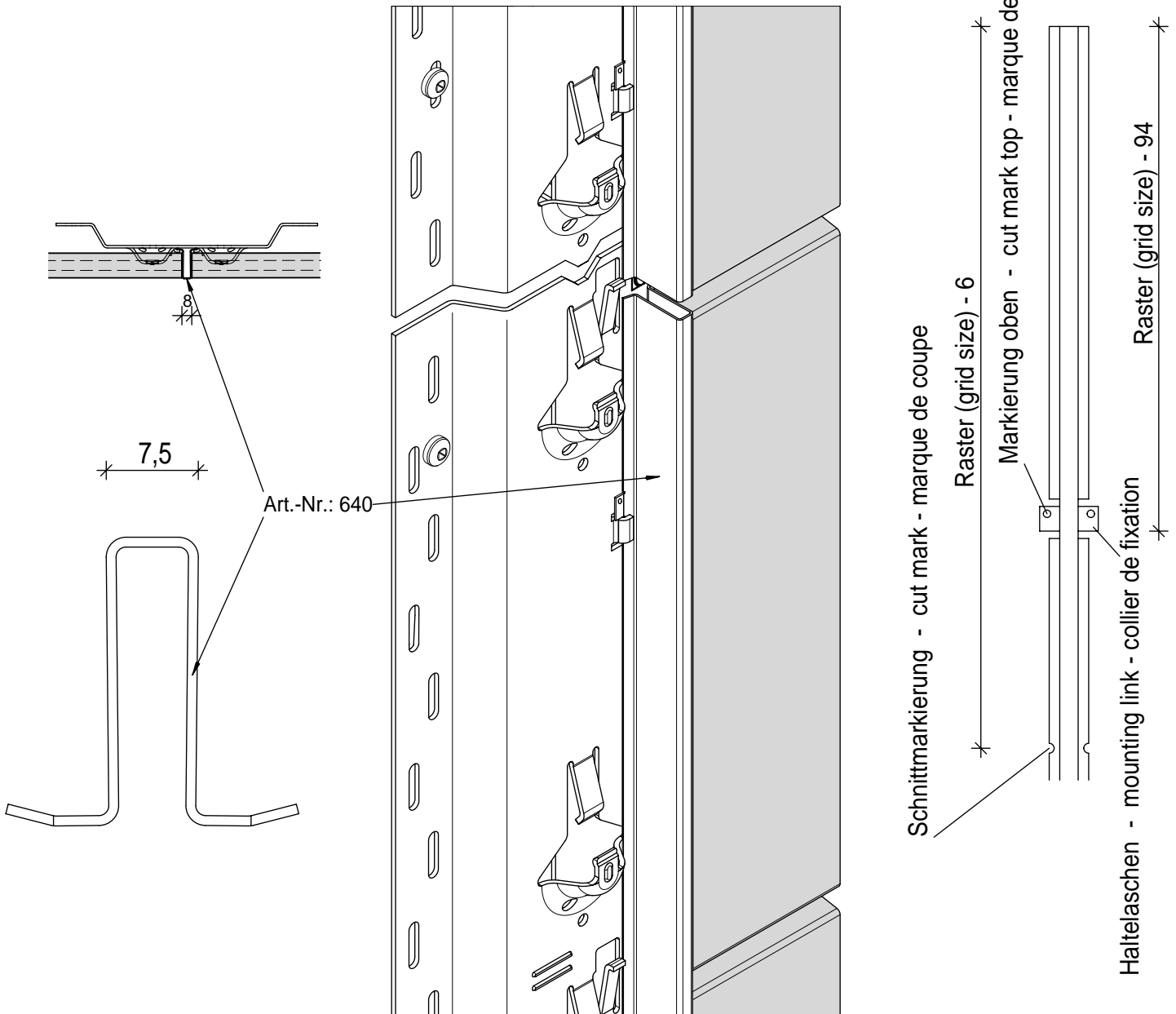


# FUGENPROFIL

JOINT PROFILE  
PROFILE A JOINTS

KeraTwin® K20

OMEGAPROFIL AUF HORIZONTALM HUTPROFIL  
OMEGA SYSTEM RAIL ON HORIZONTAL HAT PROFILE  
RAIL SYSTEME OMEGA SUR PROFILE CHAPE HORIZONTAL

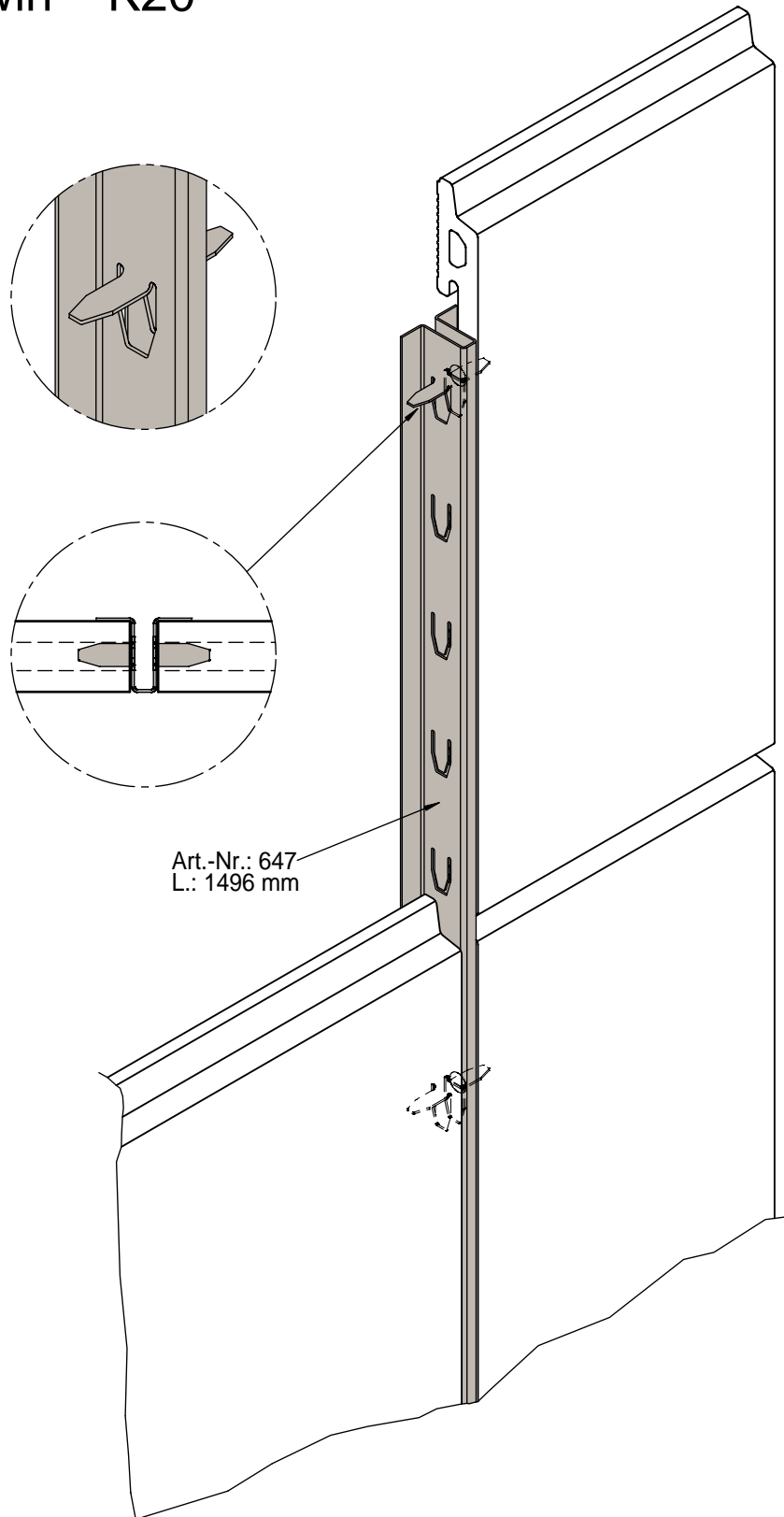


# FUGENSTECKPROFIL

JOINT PLUG IN PROFIL

PROFILÉ DE JOINT POUR CLIPPAGE

KeraTwin® K20



Art.-Nr.: 647  
L.: 1496 mm

# SYSTEMSCHNITT HORIZONTAL Einfeldträger mit beidseitigem Kragarm

HORIZONTAL SECTION Single-span girder with cantilever on both sides

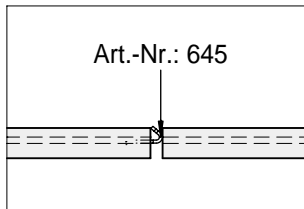
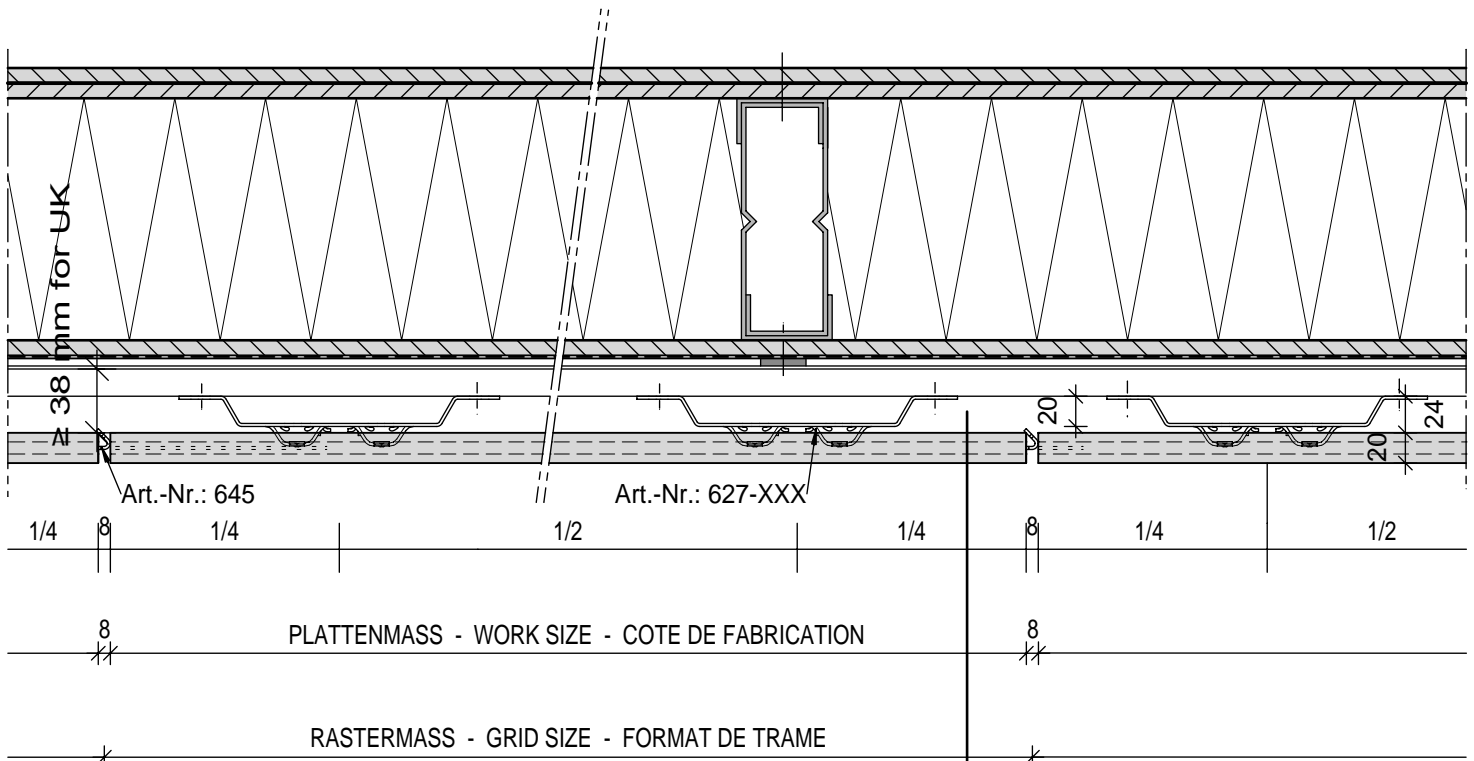
COUPE HORIZONTALE Poutre mono-travée avec cantilever des deux côtés

## KeraTwin® K20

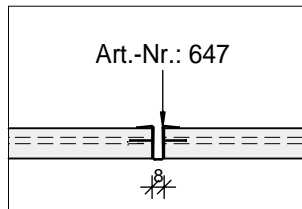
OMEGAPROFIL AUF HORIZONTALLEM HUTPROFIL

OMEGA SYSTEM RAIL ON HORIZONTAL HAT PROFILE

RAIL SYSTEME OMEGA SUR PROFILE CHAPE HORIZONTAL



FUGENABSTANDSHALTER  
JOINT SPACER  
ENTRETOISE DE JOINTS



FUGENSTECKPROFIL  
JOINT PLUG IN PROFIL  
PROFILE DE JOINT POUR CLIPPAGE

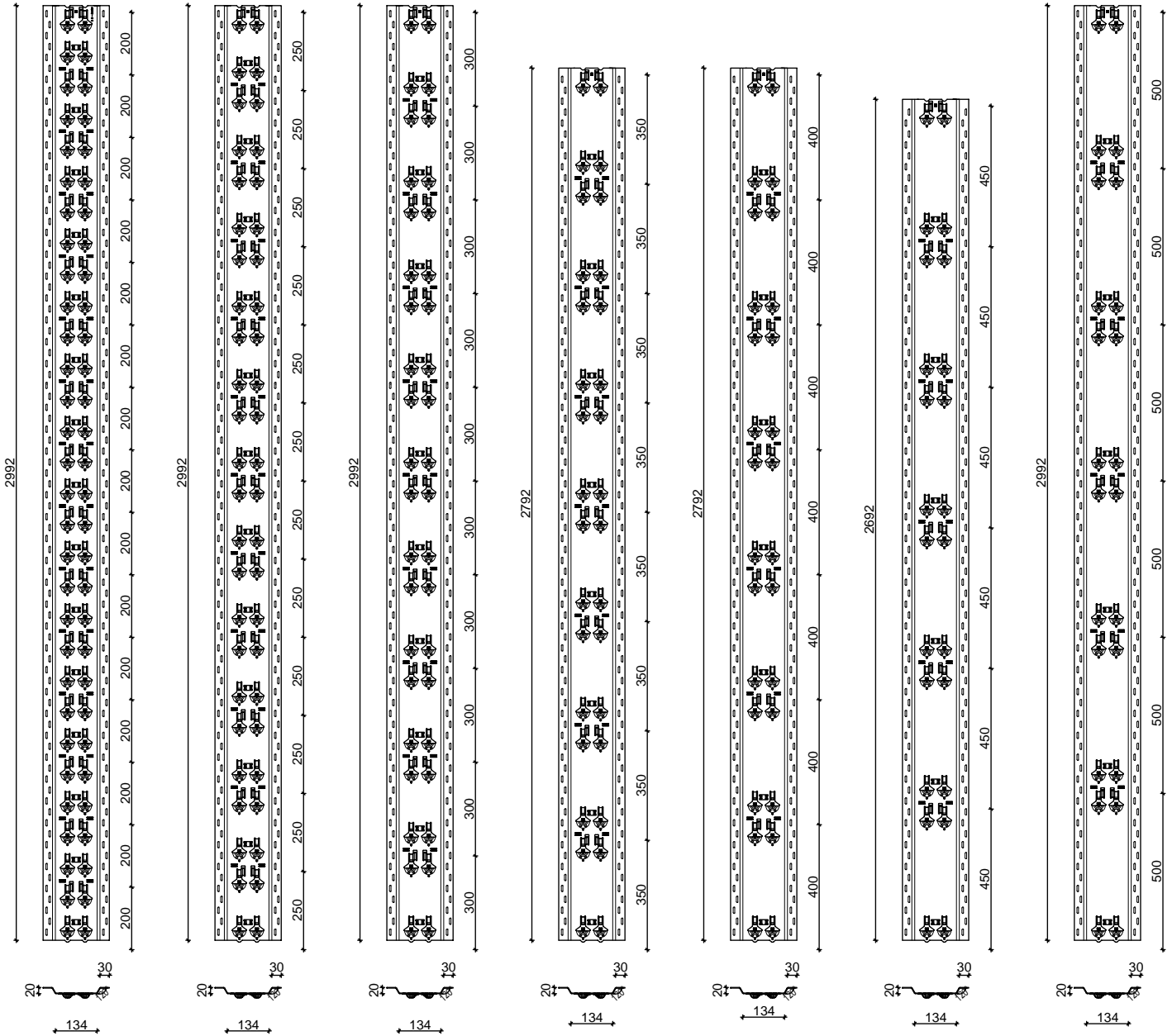
Note for the UK market:  
The air gap has to be  
≥38 mm

# LIEFERLÄNGEN 1 OMEGAPROFIL K20

LENGTHS SUPPLIED OF OMEGA SYSTEM RAIL K20

LONGUEURS LIVRABLES DU SYSTEME RAIL OMEGA K20

KeraTwin® K20



RASTER 20,0 cm 15 REIHEN    RASTER 25,0 cm 12 REIHEN    RASTER 30,0 cm 10 REIHEN    RASTER 35,0 cm 8 REIHEN    RASTER 40,0 cm 7 REIHEN    RASTER 45,0 cm 6 REIHEN    RASTER 50,0 cm 6 REIHEN

Art.-Nr.: 624-XXX beschichtet / painted / coloré

Art.-Nr.: 627-XXX unbeschichtet / bright / métallique

DEUTSCHE STEINZEUG AGROB BUCHTAL AGROB BUCHTAL GmbH Architektenservice D - 92521 Schwarzenfeld Tel. 09435 / 391 3238 e-mail: as.fassade@deutsche-steinzeug.de

STAND: 2018

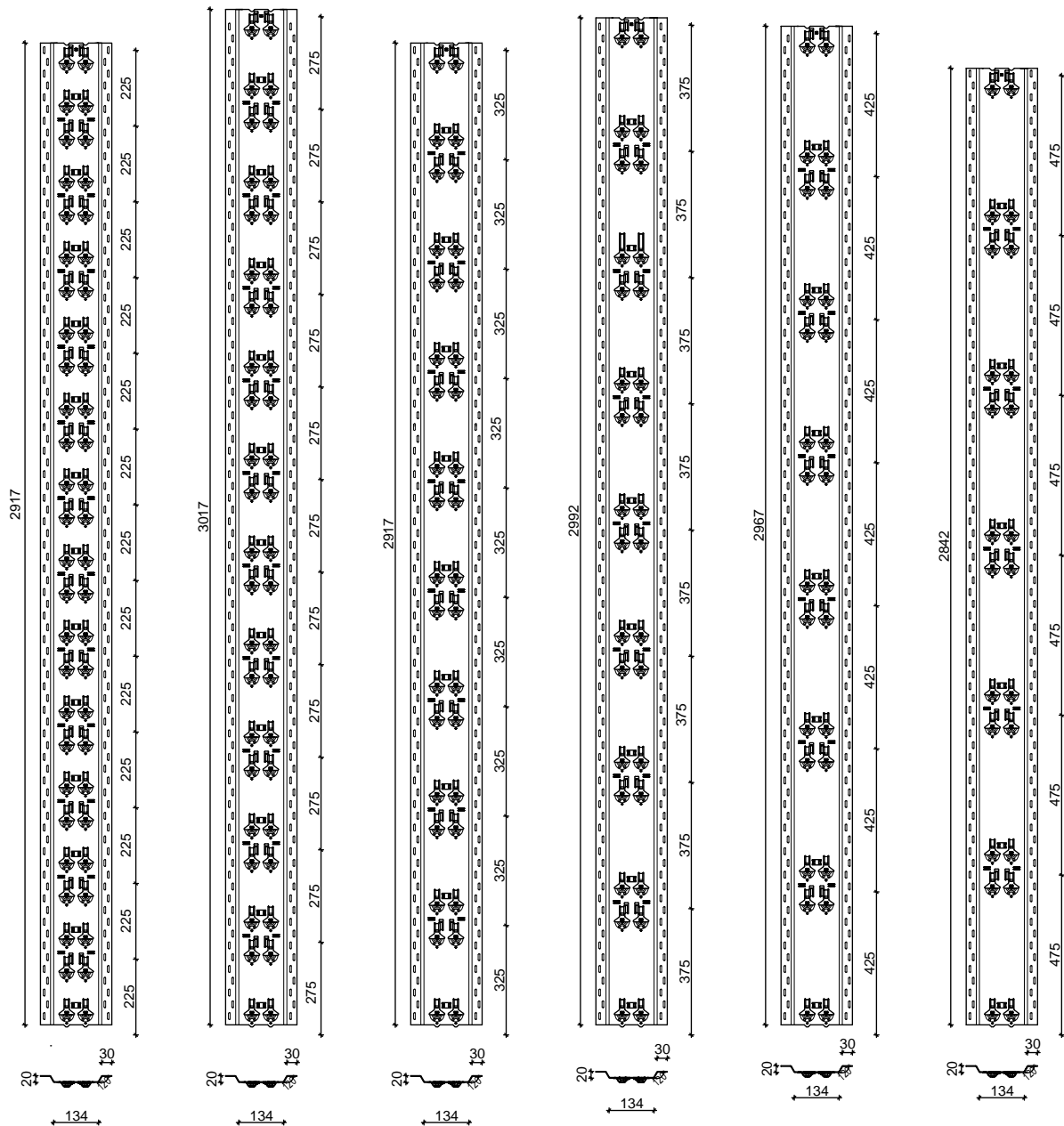
DIES SIND UNVERBINDLICHE KONSTRUKTIONSVORSCHLÄGE, DIE FÜR JEDES PROJEKT AUF ANWENDBARKEIT UND RICHTIGKEIT GEPRÜFT WERDEN MÜSSEN. THESE ARE NOT BINDING CONSTRUCTION PROPOSALS WHICH HAVE TO BE VERIFIED FOR EACH INDIVIDUAL PROJECT AS REGARDS APPLICABILITY AND CORRECTNESS. IL S' AGIT DE PROPOSITIONS DE CONSTRUCTION SANS ENGAGEMENT DE NOTRE PART QUI DOIVENT ETRE VERIFIEES POUR CHAQUE PROJET A LEUR EXACTITUDE ET FAISABILITE.

# LIEFERLÄNGEN 2 OMEGAPROFIL K20

LENGTHS SUPPLIED OF OMEGA SYSTEM RAIL K20

LONGUEURS LIVRABLES DU SYSTEME RAIL OMEGA K20

KeraTwin® K20



RASTER 22,5 cm

13 REIHEN

RASTER 27,5 cm

11 REIHEN

RASTER 32,5 cm

9 REIHEN

RASTER 37,5 cm

8 REIHEN

RASTER 42,5 cm

7 REIHEN

RASTER 47,5 cm

6 REIHEN

Art.-Nr.: 624-XXX beschichtet / painted / coloré

Art.-Nr.: 627-XXX unbeschichtet / bright / métallique

DEUTSCHE STEINZEUG **AGROB BUCHTAL**

AGROB BUCHTAL GmbH Architektenservice D - 92521 Schwarzenfeld  
Tel. 09435 / 391 3238 e-mail: as.fassade@deutsche-steinzeug.de

STAND: 2018

DIES SIND UNVERBINDLICHE KONSTRUKTIONSVORSCHLÄGE, DIE FÜR JEDES PROJEKT AUF ANWENDBARKEIT UND RICHTIGKEIT GEPRÜFT WERDEN MÜSSEN.  
THESE ARE NOT BINDING CONSTRUCTION PROPOSALS WHICH HAVE TO BE VERIFIED FOR EACH INDIVIDUAL PROJECT AS REGARDS APPLICABILITY AND CORRECTNESS.  
IL S' AGIT DE PROPOSITIONS DE CONSTRUCTION SANS ENGAGEMENT DE NOTRE PART QUI DOIVENT ETRE VERIFIEES POUR CHAQUE PROJET A LEUR EXACTITUDE ET FAISABILITE.